



**SHARP CHUCKS
AND MACHINES
LTD.**

AN ISO 9001:2015
CERTIFIED COMPANY

PRODUCT CATALOGUE »



ABOUT US

The journey of Sharp began in 1968 with the manufacturing of machine tools and accessories. With a commitment to innovation and quality, we set new industry standards in the production of chucks. Over the years, we have established ourselves as a trusted brand across India and international markets.

In 1988, driven by a dynamic and visionary approach, we expanded our product range to include Lathe Chucks and Power Chucks, further strengthening our presence overseas.

By 2007, understanding the evolving market demands in the Automotive and Tractor industries, we ventured into casting and forging. This strategic move positioned us as one of the largest producers of customized castings and OE suppliers to globally recognized companies.

In the same year (2007), we also expanded into the manufacturing of a complete range of striking tools, including hammers, axes, bars, and more, catering to both the Indian and overseas markets.

Our Commitment to Quality

Quality is our top priority at every stage of production, starting from the selection of raw materials. To ensure precision, we utilize a SPECTROMETER for accurate chemical composition analysis. Every production process is meticulously validated by our in-house quality assurance team.

Additionally, we conduct a series of rigorous tests, including:

- Hardness testing on the Rockwell Hardness Tester
- Crack detection testing using Magnaflex
- Striking tests, Pull tests, and Stroke cycle tests to guarantee product durability and reliability

These quality control measures ensure that our customers receive only the best, delivering true value for their investment.

Our commitment to excellence has been recognized with prestigious certifications, including ISO (9001:2015), ISO (14001:2015), FSC, BSI-SA-8000:2014, and IATF 16949:2016.

At Sharp, we remain dedicated to setting new benchmarks in quality, innovation, and customer satisfaction.





Environmental Policy

Sharp Chucks is committed to continual improvement of its environmental performance and prevention of pollution by :-

1. Reducing the consumption of natural resources.
2. Minimizing waste & to reduce product rejections.
3. Complying with all environmental laws, legislation & other requirements.
4. Providing training to its employees & contractors for environment.
5. Auditing environmental management system periodically to monitor its effective Implementation.

Environmental, Social And Governance (ESG) Policy

At Sharp Chucks & Machines Ltd, we are committed to integrating Environmental, Social, and Governance (ESG) Principles into our operation to drive sustainable growth, minimize environmental impact, and create long –term value for our stakeholders.

Environmental Responsibility

We strive to reduce our environmental footprint by:

1. Implementing energy –efficient and low-emission manufacturing process
2. Reducing waste through recycling, reuse, and responsible disposal practices
3. Conserving natural resources by optimizing water and material usage
4. Complying with all environmental regulations and pursuing continuous improvement in sustainability

Social Responsibility

We prioritize the well-being of our employees, communities, and partners by:

1. Ensuring a safe, healthy, and inclusive workplace
2. Upholding human rights and fair labour practices throughout our supply chain
3. Investing in employee development, diversity, and equal opportunities
4. Engaging with and supporting local communities through responsible business practices and social initiatives

Governance & Ethical Business Practices

We uphold high ethical standards and strong corporate governance by:

1. Maintaining transparency and accountability in decision-making
2. Complying with legal and regulatory requirements
3. Preventing corruption, bribery, and unethical behavior
4. Engaging stakeholders through clear ESG reporting and continuous dialogue

We are dedicated to integrating ESG principles into our strategy and operations, continuously improvement our practices, and fostering a sustainable further for all.

INDEX



Item Name	Page No.
SLEDGE HAMMER.....	04
FAUSTEL SLEDGE HAMMER.....	05
LOCKSMITH HAMMER.....	06
MACHINIST HAMMER.....	07
BALL PEIN HAMMER.....	08
CLAW HAMMER.....	09
SINGLE BIT AXE.....	10
GERMAN TYPE AXE.....	11
WOOD SPLITTING MAUL.....	12
MAUL.....	13
FIRMAN AXE.....	14
TAMPER.....	15
BRASS SLEDGE HAMMER.....	16
BRASS LOCKSMITH HAMMER.....	17
BRASS BALL PEIN HAMMER.....	18
COPPER SLEDGE HAMMER.....	19
COPPER FAUSTEL SLEDGE HAMMER.....	20
HAMMER / AXE HEADS / WOOD WEDGE.....	21
BARS.....	24
CHISELS.....	26
VICES.....	27
PLATFORM TROLLEY.....	28
CREEPER.....	29
CREEPER SEAT.....	30
SERVICE CART.....	31
PROFESSIONAL WORK TABLE.....	32
MODULAR STORAGE SYSTEM.....	33
JACK STANDS.....	34
GRILL.....	38

SLEDGE HAMMER



- Made of Alloy steel
- Hardened and tempered
- Hardness 48 - 52 HRC
- Conforming to ANSI / DIN Standards

UTILITY

- ✓ Demolition ✓ Driving Stakes & Rebar ✓ Fracturing Stone & Concrete
- ✓ Driving Fence Posts ✓ Rail Road & Bending ✓ Shaping Metal

Optional: Available with Hickory or Ashwood & Fiber Glass Handle



CODE Ashwood Handle	CODE Fiberglass Handle	SIZE Lbs.	Fiberglass Handle Length	Hickory / Ashwood Handle Length
SH-AW-02	SH-FG-02	2 Lb	11"	11"
SH-AW-03	SH-FG-03	3 Lb	11"	11"
SH-AW-04	SH-FG-04	4 Lb	12"	12"
SH-AW-06	SH-FG-06	6 Lb	36"	36"
SH-AW-08	SH-FG-08	8 Lb	36"	36"
SH-AW-10	SH-FG-10	10 Lb	36"	36"
SH-AW-12	SH-FG-12	12 Lb	36"	36"
SH-AW-14	SH-FG-14	14 Lb	36"	36"
SH-AW-16	SH-FG-16	16 Lb	36"	36"
SH-AW-20	SH-FG-20	20 Lb	36"	36"

FAUSTEL SLEDGE HAMMER



- Made of Alloy steel
- Hardened and tempered
- Hardness 48 - 52 HRC
- Conforming to ANSI / DIN Standards

UTILITY

- ✓ Demolition ✓ Driving Stakes & Rebar ✓ Fracturing Stone & Concrete
- ✓ Driving Fence Posts ✓ Rail Road & Bending ✓ Shaping Metal

Optional: Available with Hickory or Ashwood & Fiber Glass Handle



CODE Ashwood Handle	CODE Fiberglass Handle	SIZE Gms.	Fiberglass Handle Length	Hickory / Ashwood Handle Length
FSH-AW-1000	FSH-FG-1000	1000	10"	10"
FSH-AW-1250	FSH-FG-1250	1250	10"	10"
FSH-AW-1500	FSH-FG-1500	1500	11"	11"
FSH-AW-2000	FSH-FG-2000	2000	12"	12"
FSH-AW-3000	FSH-FG-3000	3000	24"	24"
FSH-AW-4000	FSH-FG-4000	4000	28"	28"
FSH-AW-5000	FSH-FG-5000	5000	32"	32"
FSH-AW-6000	FSH-FG-6000	6000	32"	32"
FSH-AW-8000	FSH-FG-8000	8000	36"	36"
FSH-AW-10000	FSH-FG-10000	10,000	36"	36"

LOCKSMITH HAMMER



- Made of Alloy steel
- Hardened and tempered
- Hardness 48 - 52 HRC
- Conforming to ANSI / DIN Standards

UTILITY

- ✓ Riveting ✓ Forging ✓ Shaping & flattening of metal ✓ Embossing
- ✓ Removal of dents ✓ Jewellery application

Optional: Available with Hickory or Ashwood & Fiber Glass Handle



CODE Ashwood Handle	CODE Fiberglass Handle	SIZE Gms.	Fiberglass Handle Length	Hickory / Ashwood Handle Length
LH-AW-100	LH-FG-100	100	12"	12"
LH-AW-200	LH-FG-200	200	12"	12"
LH-AW-300	LH-FG-300	300	12"	12"
LH-AW-400	LH-FG-400	400	12"	12"
LH-AW-500	LH-FG-500	500	12"	12"
LH-AW-600	LH-FG-600	600	14"	14"
LH-AW-800	LH-FG-800	800	14"	14"
LH-AW-1000	LH-FG-1000	1000	14"	14"
LH-AW-1500	LH-FG-1500	1500	16"	16"
LH-AW-2000	LH-FG-2000	2000	16"	16"

MACHINIST HAMMER


- Made of Alloy steel
- Hardened and tempered
- Hardness 48 - 52 HRC
- Conforming to ANSI / DIN Standards



CODE Ashwood Handle	CODE Fiberglass Handle	SIZE Gms.	Fiberglass Handle Length	Hickory / Ashwood Handle Length
MH-AW-3000	MH-FG-3000	3000	36"	36"
MH-AW-4000	MH-FG-4000	4000	36"	36"
MH-AW-5000	MH-FG-5000	5000	36"	36"
MH-AW-6000	MH-FG-6000	6000	36"	36"
MH-AW-8000	MH-FG-8000	8000	36"	36"
MH-AW-10000	MH-FG-10000	10,000	36"	36"

UTILITY

✓ Light demolition work ✓ Cutting stone & concrete ✓ Masonry

Optional: Available with Hickory or Ashwood & Fiber Glass Handle

BALL PEIN HAMMER



- Made of Alloy steel
- Hardened and tempered
- Hardness 48 - 52 HRC
- Conforming to ANSI / DIN Standards

UTILITY

- ✓ Bending & shaping metal ✓ Driving punches & chisels ✓ Hand forging
- ✓ Concrete & stone work ✓ Setting rivets ✓ Texturing face of metal
- ✓ Peen riveted & welded material

Optional: Available with Hickory or Ashwood & Fiber Glass Handle



CODE Ashwood Handle	CODE Fiberglass Handle	SIZE Gms.	Fiberglass Handle Length	Hickory / Ashwood Handle Length
BPH-AW-100	BPH-FG-100	100	12"	12"
BPH-AW-200	BPH-FG-200	200	12"	12"
BPH-AW-300	BPH-FG-300	300	12"	12"
BPH-AW-500	BPH-FG-500	500	13"	13"
BPH-AW-600	BPH-FG-600	600	14"	14"
BPH-AW-800	BPH-FG-800	800	14"	14"
BPH-AW-1000	BPH-FG-1000	1000	16"	16"

CLAW HAMMER


- Made of Alloy steel
- Hardened and tempered
- Hardness 48 - 52 HRC
- Conforming to ANSI / DIN Standards


UTILITY

✓ Pulling Out Nails ✓ Lifting Floorboards ✓ Carpentry Work

Optional: Available with Hickory or Ashwood & Fiber Glass Handle

CODE Ashwood Handle	CODE Fiberglass Handle	SIZE OZ	Fiberglass Handle Length	Hickory / Ashwood Handle Length
CH-AW-08	CH-FG-08	08 Oz	13"	10"
CH-AW-16	CH-FG-16	16 Oz	13"	13"
CH-AW-20	CH-FG-20	20 Oz	13"	13"

SINGLE BIT AXE



EDGES SHARPLY
POLISHED & GROUND

- Made of Alloy steel
- Hardened and tempered
- Hardness 48 - 52 HRC
- Conforming to ANSI Standards



CODE Ashwood Handle	CODE Fiberglass Handle	SIZE Lbs.	Fiberglass Handle Length	Hickory / Ashwood Handle Length
SBA-AW-1.25	SBA-FG-1.25	1.25 Lbs.	14"	14"
SBA-AW-2.50	SBA-FG-2.50	2.5 Lbs.	24"	24"
SBA-AW-3.50	SBA-FG-3.50	3.5 Lbs.	36"	36"

UTILITY

- ✓ Designed to cut its way across wood fibers.
- ✓ Used for: • Chopping wood • knocking out chips

Optional: Available with Hickory or Ashwood & Fiber Glass Handle

GERMAN TYPE AXE

EDGES SHARPLY
POLISHED & GROUND

- Made of Alloy steel
- Hardened and tempered
- Hardness 48 - 52 HRC
- Conforming to DIN 7294 Standards

UTILITY

✓ Pulling Out Nails ✓ Lifting Floorboards ✓ Carpentry Work

Optional: Available with Hickory or Ashwood & Fiber Glass Handle

DIN

CODE Ashwood Handle	CODE Fiberglass Handle	SIZE Gms.	Fiberglass Handle Length	Hickory / Ashwood Handle Length
GTA-AW-600	GTA-FG-600	600	13"	13"
GTA-AW-800	GTA-FG-800	800	13"	13"
GTA-AW-1000	GTA-FG-1000	1000	24"	24"
GTA-AW-1250	GTA-FG-1250	1250	28"	28"
GTA-AW-2000	GTA-FG-2000	2000	36"	36"

WOOD SPLITTING MAUL



EDGES SHARPLY
POLISHED & GROUND

- Made of Alloy steel
- Hardened and tempered
- Hardness 48 - 52 HRC
- Conforming to DIN / ANSI Standards

UTILITY

- ✓ Designed to split a piece of wood in two parts by forcing the wood fibers apart parallel to the grain ✓ Kindling of wood

Optional: Available with Hickory or Ashwood & Fiber Glass Handle



CODE Ashwood Handle	CODE Fiberglass Handle	SIZE Lbs.	Fiberglass Handle Length	Hickory / Ashwood Handle Length
WSM-AW-4.5	WSM-FG-4.5	4.5 Lbs.	36"	36"

MAUL



EDGES SHARPLY
POLISHED & GROUND



- Made of Alloy steel
- Hardened and tempered
- Hardness 48 - 52 HRC
- Conforming to DIN / ANSI Standards

UTILITY

- ✓ Designed to split a piece of wood in two parts by forcing the wood fibers apart parallel to the grain ✓ Kindling of wood ✓ Heavy duty Maul
- ✓ Sharp edge to destroy the wood log

Optional: Available with Hickory or Ashwood & Fiber Glass Handle



CODE Ashwood Handle	CODE Fiberglass Handle	SIZE Lbs.	Fiberglass Handle Length	Hickory / Ashwood Handle Length
ML-AW-4.5	ML-FG-4.5	4.5 Lbs.	36"	36"

FIREMAN AXE



EDGES SHARPLY
POLISHED & GROUND

- Made of Alloy steel
- Hardened and tempered
- Hardness 48 - 52 HRC
- Conforming to DIN / ANSI Standards

UTILITY

- ✓ Designed to cut its way across wood fibers.
- Used for: ✓ Chopping wood ✓ knocking out chips ✓ Heavy duty Axe
- ✓ Wide mouth to split the wood ✓ Brake glass and used by fireman

Optional: Available with Hickory or Ashwood & Fiber Glass Handle



CODE	CODE	SIZE	Fiberglass	Hickory / Ashwood
Ashwood Handle	Fiberglass Handle	Lbs.	Handle Length	Handle Length
FA-AW-06	FA-FG-06	06 Lbs.	36"	36"

TAMPER


- Made of Alloy steel
- Hardened and tempered
- Hardness 48 - 52 HRC

UTILITY

✓ To Level Ground ✓ Compact Soil ✓ Repair Pavers

Optional: Available with Hickory or Ashwood , Fiberglass & Steel Handle

CODE	CODE	CODE	SIZE	Handle Length
Ashwood Handle	Fiberglass Handle	Steel Handle	Inch	
TM-AH-08	TM-FG-08	TM-SH-08	8 x 8	42"
TM-AH-08A	TM-FG-08A	TM-SH-08A	8 x 8	48"
TM-AH-10	TM-FG-10	TM-SH-10	10 x 10	51"

BRASS SLEDGE HAMMER

- Made of High Quality Brass
- Non Sparking Hammer used in Flammable areas like Oil Fields

UTILITY

- ✓ Metal forming ✓ Mining ✓ Underground mining ✓ Oil rigs
- ✓ Gas industry

Optional: Available with Hickory or Ashwood & Fiber Glass Handle

CODE Ashwood Handle	CODE Fiberglass Handle	SIZE Lbs.	Fiberglass Handle Length	Hickory / Ashwood Handle Length
BSH-AW-1.0	BSH-FG-1.0	1 Lbs.	12"	12"
BSH-AW-1.5	BSH-FG-1.5	1.5 Lbs.	12"	12"
BSH-AW-2.0	BSH-FG-2.0	2 Lbs.	12"	12"
BSH-AW-4.0	BSH-FG-4.0	4 Lbs.	16"	16"

BRASS LOCKSMITH HAMMER



- Made of High Quality Brass
- Non Sparking Hammer used in Flammable areas like Oil Fields

UTILITY

- ✓ Metal forming ✓ Mining ✓ Underground mining ✓ Oil rigs
- ✓ Gas industry

Optional: Available with Hickory or Ashwood & Fiber Glass Handle

CODE Ashwood Handle	CODE Fiberglass Handle	SIZE Lbs.	Fiberglass Handle Length	Hickory / Ashwood Handle Length
BLH-AW-100	BLH-FG-100	100	12"	12"
BLH-AW-200	BLH-FG-200	200	12"	12"
BLH-AW-300	BLH-FG-300	300	12"	12"
BLH-AW-400	BLH-FG-400	400	12"	12"
BLH-AW-500	BLH-FG-500	500	12"	12"
BLH-AW-600	BLH-FG-600	600	14"	14"
BLH-AW-800	BLH-FG-800	800	14"	14"
BLH-AW-1000	BLH-FG-1000	1000	14"	14"
BLH-AW-1500	BLH-FG-1500	1500	16"	16"
BLH-AW-2000	BLH-FG-2000	2000	16"	16"

BRASS BALL PEIN HAMMER



- Made of High Quality Brass
- Non Sparking Hammer used in Flammable areas like Oil Fields

UTILITY

- ✓ Metal forming ✓ Mining ✓ Underground mining ✓ Oil rigs
- ✓ Gas industry

Optional: Available with Hickory or Ashwood & Fiber Glass Handle

CODE Ashwood Handle	CODE Fiberglass Handle	SIZE Gms.	Fiberglass Handle Length	Hickory / Ashwood Handle Length
BBP-AW-100	BBP-FG-100	100	12"	12"
BBP-AW-200	BBP-FG-200	200	12"	12"
BBP-AW-300	BBP-FG-300	300	12"	12"
BBP-AW-500	BBP-FG-500	500	13"	13"
BBP-AW-600	BBP-FG-600	600	14"	14"
BBP-AW-800	BBP-FG-800	800	14"	14"
BBP-AW-1000	BBP-FG-1000	1000	16"	16"

COPPER SLEDGE HAMMER


- Made of High Quality Copper
- Non Sparking Hammer used in Flammable areas like Oil Fields

UTILITY

- ✓ Metal forming ✓ Mining ✓ Underground mining ✓ Oil rigs
- ✓ Gas industry

Optional: Available with Hickory or Ashwood & Fiber Glass Handle

CODE Ashwood Handle	CODE Fiberglass Handle	SIZE Lbs.	Fiberglass Handle Length	Hickory / Ashwood Handle Length
CSH-AW-1.0	CSH-FG-1.0	1 Lbs.	12"	12"
CSH-AW-1.5	CSH-FG-1.5	1.5 Lbs.	12"	12"
CSH-AW-2.0	CSH-FG-2.0	2 Lbs.	12"	12"
CSH-AW-4.0	CSH-FG-4.0	4 Lbs.	16"	16"

COPPER FAUSTEL SLEDGE HAMMER



- Made of High Quality Copper
- Non Sparking Hammer used in Flammable areas like Oil Fields

UTILITY

- ✓ Metal forming ✓ Mining ✓ Underground mining ✓ Oil rigs
- ✓ Gas industry

CODE Ashwood Handle	CODE Fiberglass Handle	SIZE Gms.	Fiberglass Handle Length	Hickory / Ashwood Handle Length
CFS-AW-1.00	CFS-FG-1.00	1000	12"	12"
CFS-AW-1.25	CFS-FG-1.25	1250	12"	12"
CFS-AW-1.50	CFS-FG-1.50	1500	12"	12"
CFS-AW-2.00	CFS-FG-2.00	2000	16"	16"

Optional: Available with Hickory or Ashwood & Fiber Glass Handle

BRASS & COPPER SLEDGE HAMMER HEAD ONLY



- Made of High Quality Brass / Copper
- Non Sparking Hammer used in Flammable areas like Oil Fields

SIZE Lbs.
1 Lb
1.5 Lb
2 Lb
4 Lb

BRASS & COPPER FAUSTEL SLEDGE HAMMER HEAD ONLY



- Made of High Quality Brass / Copper
- Non Sparking Hammer used in Flammable areas like Oil Fields

SIZE Gms.
1000
1250
1500
2000

BRASS LOCKSMITH HAMMER HEAD ONLY



- Brass / Copper
- Made of High Quality Brass
- Non Sparking Hammer used in Flammable areas like Oil Fields

SIZE Gms.	SIZE Gms.
100	600
200	800
300	1000
400	1500
500	2000

BRASS BALL PEIN HAMMER HEAD ONLY



- Brass / Copper
- Made of High Quality Brass
- Non Sparking Hammer used in Flammable areas like Oil Fields

SIZE Gms.	SIZE Gms.
100	600
200	800
300	1000
500	

SLEDGE HAMMER HEAD ONLY

- Made of Alloy steel
- Hardened and tempered
- Hardness 48 - 52 HRC
- Conforming to ANSI / DIN Standards

SIZE Lbs.
1 Lb
1.5 Lb
2 Lb
4 Lb
6 Lb
8 Lb
10 Lb
12 Lb
14 Lb
16 Lb
20 Lb

**LOCKSMITH / MACHINIST
HAMMER HEAD ONLY**

- Made of Alloy steel
- Hardened and tempered
- Hardness 48 - 52 HRC
- Conforming to ANSI / DIN Standards

SIZE Gms.	SIZE Gms.
100	1500
200	2000
300	3000
400	4000
500	5000
600	6000
800	8000
1000	10,000

AXE HEAD ONLY

- Made of Alloy steel
- Hardened and tempered
- Hardness 48 - 52 HRC
- Conforming to ANSI / DIN Standards

SIZE Gms.
600
800
1000
1250
2000

MAUL HEAD ONLY



- Made of Alloy steel
- Hardened and tempered
- Hardness 48 - 52 HRC
- Conforming to ANSI / DIN Standards

SIZE
Kgs.

3 Kgs.

WOOD WEDGE



- Made of Alloy steel
- Hardened and tempered
- Hardness 48 - 52 HRC

SIZE
Lbs.

3 Lbs.

5 Lbs.

DIAMOND WEDGE



- Made of Alloy steel
- Hardened and tempered
- Hardness 48 - 52 HRC

SIZE
Lbs.

3.5 Lbs.

5 Lbs.

UTILITY BAR



- Made of Alloy steel
- Hardened and tempered
- Hardness 48 - 52 HRC
- Conforming to ANSI / DIN Standards

SIZE INCH	SIZE MM
7	175
15	375

WRECKING BAR



- Made of Alloy steel
- Hardened and tempered
- Hardness 48 - 52 HRC
- Conforming to ANSI / DIN Standards

SIZE INCH	DIA INCH
12"	5/8"
18"	5/8"
24"	3/4"
30"	3/4"
36"	3/4"
48"	7/8"

BAR BENDING TOOL


- Made of Carbon Steel
- Induction Hardened and tempered
- Epoxy Coated

SIZE INCH	SIZE MM
7	175
15	375

TYRE LEVER FLAT


- Drop Forged
- Hardened & Tempered
- Powder Coated / Nickle Chrome Plated

SIZE INCH	SIZE MM
12	300
16	400
18	450
20	500
24	600
30	750

**COLD CHISEL
FLAT CUT / POINTED**

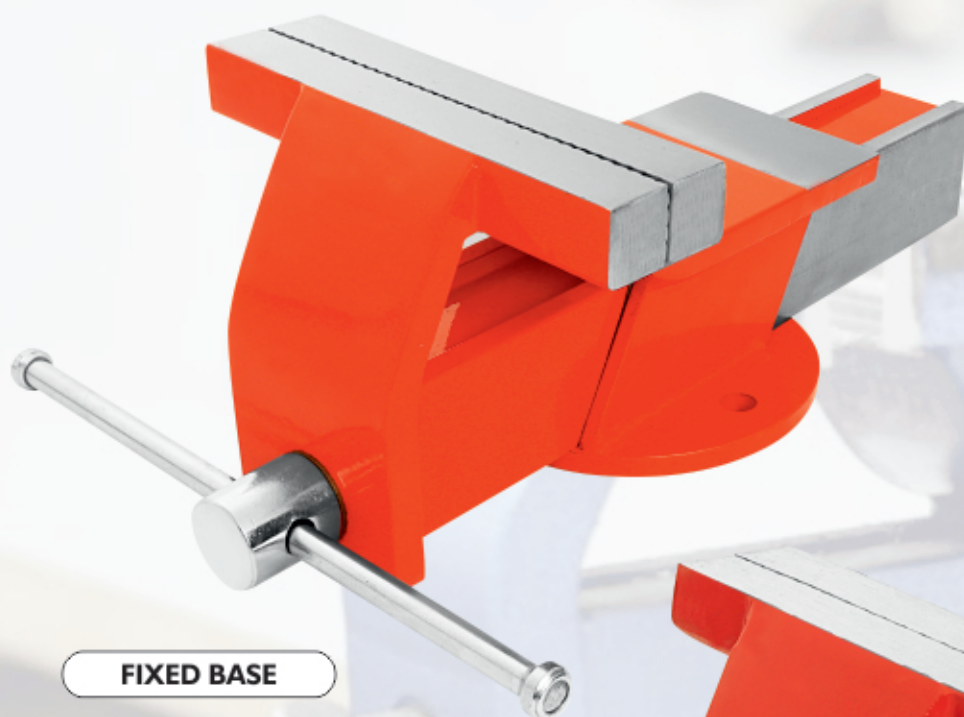

- Made of Carbon Steel
- Drop Forged
- Hardened and tempered

SIZE MM	WIDTH MM
100	6
125	10
150	13
200	13
200	19
250	19
300	19
450	19
225	25
250	25
300	25

BRICK BOLSTER CHISEL


- Made of Carbon Steel
- Drop Foeged
- Hardened and tempered

SIZE INCH	SIZE MM
3	75
4	100

ALL STEEL VICE

FIXED BASE

SWIVEL BASE

- Fixed & Swivel Base
- Graded Steel
- Hardened and Tempered Jaws
- Alloy Steel

SIZE mm	Net Weight Fixed Base Kgs.	Net Weight Swivel Base Kgs.	Length of Jaws (mm)
80	3.500	4.000	80
100	4.000	4.500	100
125	5.000	5.500	125
150	6.000	6.500	150
200	11.000	12.000	200

PLATFORM TROLLEY



1 **YEAR**
LIMITED
WARRANTY

450 LBS.
LOAD CAPACITY

STRONG & SMART

- ✓ Sharp Heavy Duty Trolley is built with strong body and smarty designed to look attractive.

SMOOTH OPERATION

- ✓ These trolley are designed to offer a very smooth and easy operation to the user.

STRONG & SMART

- ✓ The trolley is smartly designed with foldable handle so that it occupies less space.

CREEPER



ADJUSTABLE HEAD REST



- Cushioned Red Vinyl Cover
- Powder Coated Black Frame
- 6-Wheel Creeper
- Adjustable Head Rest
- Set of wheels to make it easy for the mechanic to maneuver

1 YEAR
LIMITED
WARRANTY

CREEPER SEAT

- Cushioned Red Vinyl Cover
- Powder Coated Black Frame
- Includes convenient 1 inch deep parts tray: 11.5 inch by 12.5 inch
- Frame dimensions: 17 inch deep by 14 inch long by 14 inch high.
- 2.5 inch casters



1 YEAR
LIMITED
WARRANTY

SERVICE CART



- 3 tier cart with side mount screwdriver/pry bar holder black painted finish.
- 31.5" long, 16" wide
- 4 swivel castor style wheels
- 350 lb. Capacity
- Sliding drawer and organizer
- Includes foam drawer and tray liners

1 YEAR
LIMITED
WARRANTY

PROFESSIONAL WORK TABLE



- Durable Powder Coated Finish
- Full bottom shelf
- Weight capacity: 1200 Lbs.
 - Top Panel: 14 gauge steel
- Bottom Shelf: 14 gauge steel
- Steel Support: 14 gauge steel
- Overall Dimensions: 60" W x 31" D x 34" H

Supplied with
adjustable foot pad

1 YEAR
LIMITED
WARRANTY

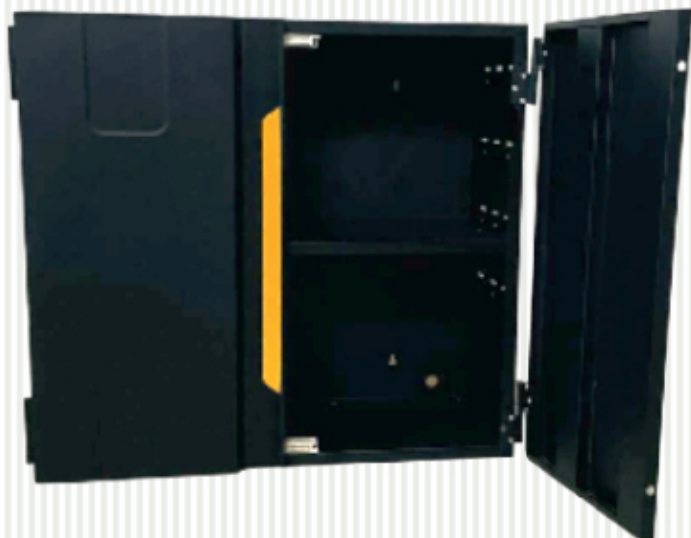
MODULAR STORAGE SYSTEM

- The SHARP Modular Storage System is revolutionizing the storage industry, enabling you to Organize, access and Transport your Life.
- The SHARP Wall mounted Cabinet is designed to maximize your garage or workshop space.
- The 200 Lb. weight capacity and 21 GA steel body provide increased durability.
- The 6 Position adjustable shelf allows you to customize to your tool collection.
- The integrated cord access ensures protection of your batteries and chargers.
- Easily secure your items with a locking point and magnetic door closure.



● **120 Lbs Weight Capacity**

● **200 Lbs. Load Capacity**



1 YEAR
LIMITED
WARRANTY

2 TON JACK STAND

- Available with & without key
- Range : 10-7/8" to 16-1/2"
- Maximum Height: 38 cm or 14-15/16"
- Minimum Height: 25 cm or 9-13/16"
- Stand can be raised or lowered to the height needed; self-locking ratchet for ease of use.
- It includes two heavy duty steel jack stand with a load capacity of 4000 Lbs., making them suitable for emergency tire changes, repairs and more.
- Wide pyramid style foot base provides added strength; Large foot base delivers additional stability and measures 6-11/16" x 5-7/8"

**4000 LBS.**

LOAD CAPACITY

1**YEAR**
LIMITED
WARRANTY

3 TON JACK STAND

- Available with & without key
- Range : 11-3/4" to 16-3/4"
- Rugged, high-grade steel construction stands up to the load
- Self locking ratchet provides precise adjustments
- Patented double-lock technology with safety pin design adds extra safety and security when working beneath a vehicle
- Large saddle surface area provides excellent contact with load being supported
- Durable weather resistant powder coated surface provides Easy cleanup



6000 LBS.

LOAD CAPACITY

1

YEAR
LIMITED
WARRANTY

6 TON JACK STAND

- Available with & without key
- Range : 15-5/16" to 23-13/16"
- Rugged, high-grade steel construction stands up to the load
- Self locking ratchet provides precise adjustments
- Patented double-lock technology with safety pin design adds extra safety and security when working beneath a vehicle
- Large saddle surface area provides excellent contact with load being supported
- Durable weather resistant powder coated surface provides Easy cleanup



12000 LBS.
LOAD CAPACITY

1 YEAR
LIMITED
WARRANTY

12 TON JACK STAND

- Available with & without key
- Range : 18-5/16" to 28"
- Rugged, high-grade steel construction stands up to the load
- Self locking ratchet provides precise adjustments
- Patented double-lock technology with safety pin design adds extra safety and security when working beneath a vehicle
- Large saddle surface area provides excellent contact with load being supported
- Durable weather resistant powder coated surface provides Easy cleanup


24000 LBS.
LOAD CAPACITY
1
**YEAR
LIMITED
WARRANTY**

GRILL

- Dimensions (L x B x H) : 550 x 320 x 270 cm
- Cooking Area - 51cm x 27 xm (maximum)
- Stainless Steel oven, high quality, solid and durable, fine workmanship
- Beautiful appearance, elegant and fashionable
- Charcoal Barbe Durable Body.

1 YEAR
LIMITED
WARRANTY



CONTACT US

1. USA
2. Russia
3. Italy
4. Germany
5. Sweden
6. Venezuela
7. Croatia



COUNTRIES TO EXPORT

Company Profile

Sharp is a specialized company owned and professionally managed by technically qualified, experienced since last 25 years. We are well known in the Indian and Overseas Markets as manufacturers and exporters of Striking tools , DIY and Hand tools.

All our products are of international Standards. Sharp quality is accepted worldwide since 25 years. Sharp, considered as one of the best manufacturing units and having complete integrated plant from forging to finish products with highly Precision Machine shop.



+91 181 2610341, 2611763, 181 2610344



A -12, Industrial Development Colony,
Jalandhar-12 (Punjab)- INDIA



sharp@sharpchucks.com



Web. : www.sharphandtools.com

